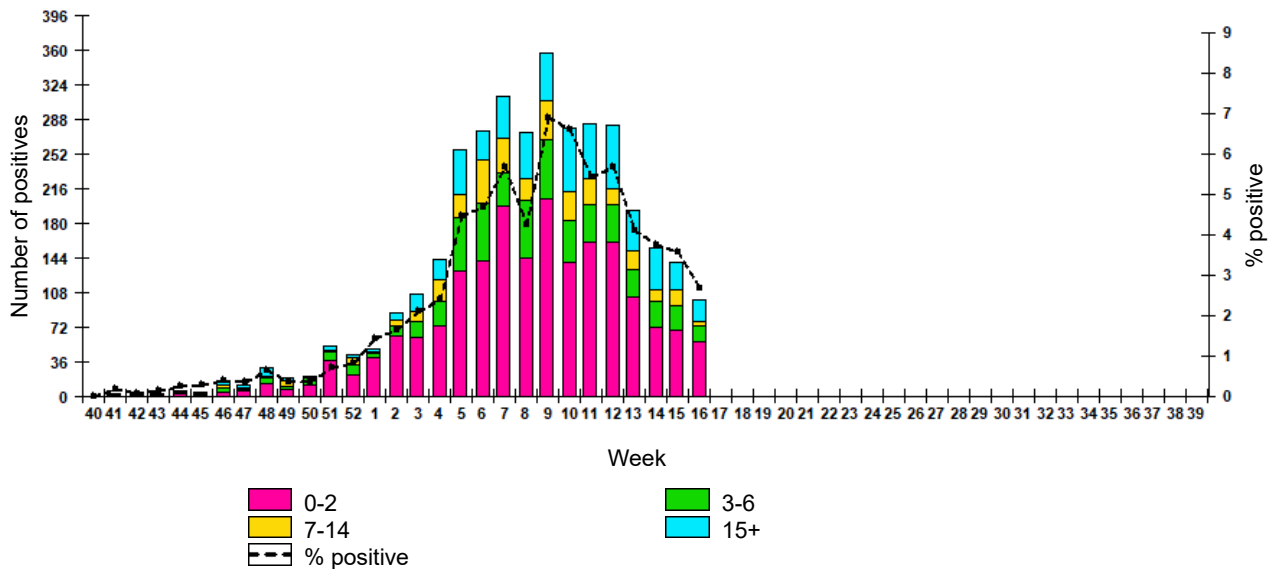


NATIONAL WEEKLY RSV BULLETIN OF THE RUSSIAN FEDERATION

week 16 of 2024 (15.04.24 - 21.04.24)

Non-sentinel surveillance data were received from 21 cities (Belgorod, Birobidzhan, Vologda, Yekaterinburg, Kazan, Kaliningrad, Kemerovo, Krasnoyarsk, Kursk, Lipetsk, Moscow, Murmansk, Nizhny Novgorod, Novosibirsk, Omsk, Perm, Petrozavodsk, St. Petersburg, Tula, Khabarovsk, Chelyabinsk) located in 6 Federal Districts. A total of 3885 patients with ARVI were tested by PCR for RSV, of which 104 (2.7%) were positive. This included 60 (10.6%) cases aged 0-2 years, 16 (4.5%) cases aged 3-6 years, 4 (1.0%) cases aged 7-14 years and 24 (0.9%) cases aged 15 years and older.

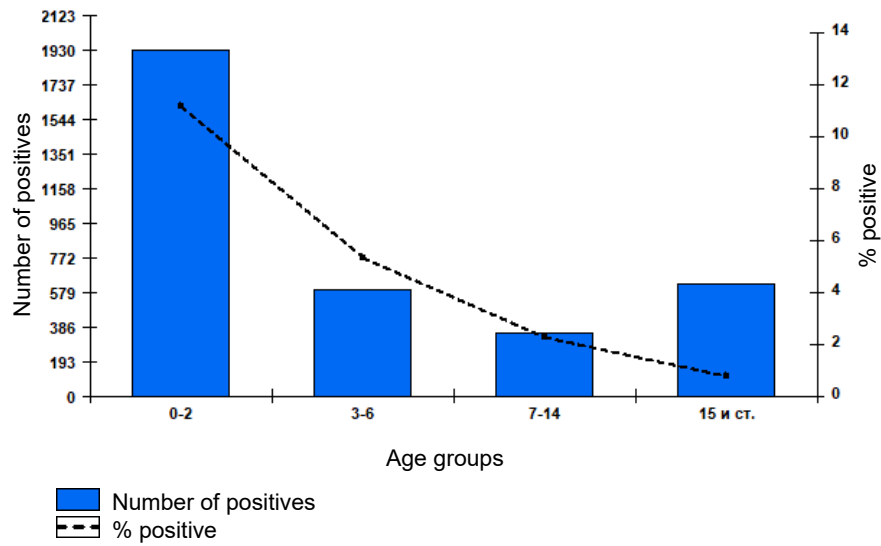
Fig.1. RT-PCR detections of RSV virus by age group and week in Russian cities



PCR testing data for RSV from week 40 of 2023 to week 16 of 2024 showed a total 125231 patients were investigated, including 17266 children aged 0-2 years, 11196 children aged 3-6 years, 15734 children aged 7-14 years and 81035 patients aged 15 years or older. RSV as a cause of acute respiratory infection was more commonly detected among children aged 0-2 years.

The cumulative detection rate among children aged 0-2 years from week 40 of 2023 to week 16 of 2024 was **11.2%**. Among children aged 3-6 years, the detection rate was **5.3%**, among children aged 7-14 years - **2.3%**. The RSV detection rate among patients aged 15 years or older was **0.8%**.

Fig. 2. Cumulative number and percentage of patients positive for RSV by age group in Russian cities, week 40 of 2023 to week 16 of 2024



In the period from week 40 of 2023 to week 16 of 2024, RSV was detected in all weeks except week 40. The average RSV detection rate was approximately **2.8%**. The highest weekly detection rate of approximately **6.8%** was reported on week 09 2024.