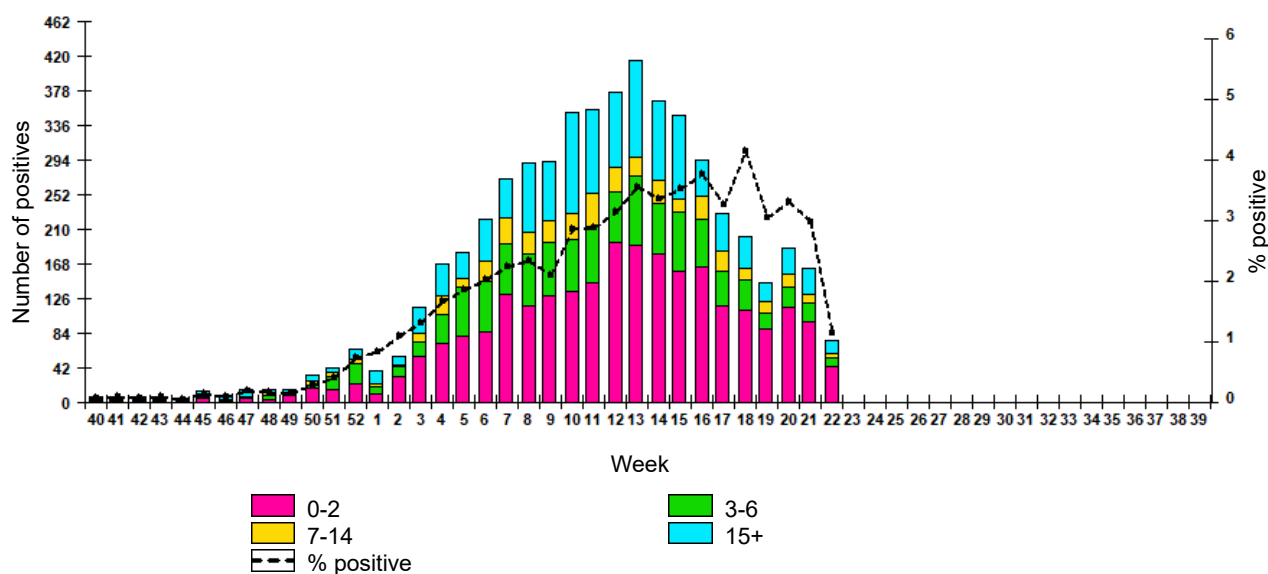


NATIONAL WEEKLY RSV BULLETIN OF THE RUSSIAN FEDERATION

week 22 of 2025 (26.05.25 - 01.06.25)

Non-sentinel surveillance data were received from 34 cities (Arkhangelsk, Vladivostok, Vladimir, Volgograd, Vologda, Voronezh, Ekaterinburg, Kazan, Kaliningrad, Kemerovo, Kirov, Krasnodar, Krasnoyarsk, Moscow, Murmansk, Novosibirsk, Omsk, Orenburg, Penza, Perm, Petrozavodsk, Petropavlovsk, Samara, St. Petersburg, Simferopol, Syktyvkar, Tomsk, Tula, Ulyanovsk, Khabarovsk, Chita, Yuzhno-Sakhalinsk, Yakutsk, and Yaroslavl) located in 7 Federal Districts. A total of 6726 patients with ARVI were tested by PCR for RSV, of which 77 (1.1%) were positive. This included 44 (3.4%) cases aged 0-2 years, 11 (1.0%) cases aged 3-6 years, 6 (0.6%) cases aged 7-14 years and 16 (0.5%) cases aged 15 years and older.

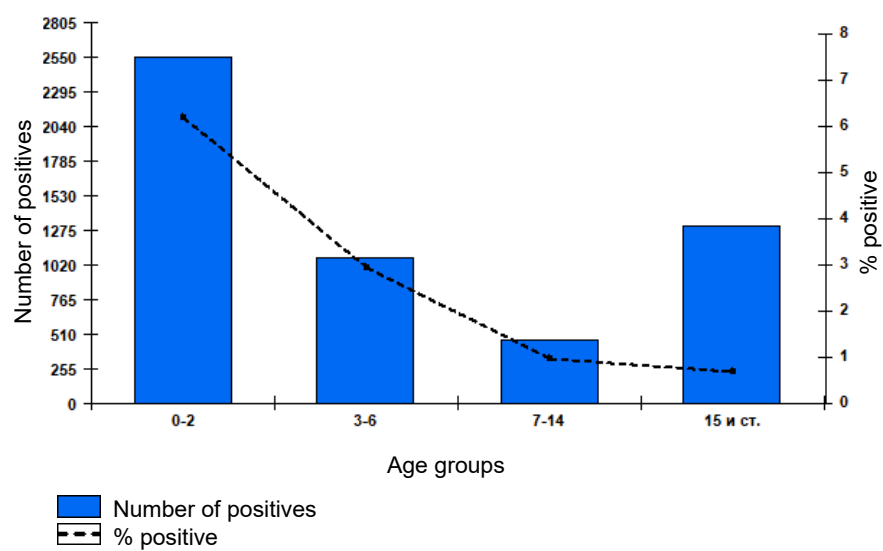
Fig.1. RT-PCR detections of RSV virus by age group and week in Russian cities



PCR testing data for RSV from week 40 of 2024 to week 22 of 2025 showed a total 319326 patients were investigated, including 41175 children aged 0-2 years, 36256 children aged 3-6 years, 48427 children aged 7-14 years and 193468 patients aged 15 years or older. RSV as a cause of acute respiratory infection was more commonly detected among children aged 0-2 years.

The cumulative detection rate among children aged 0-2 years from week 40 of 2024 to week 22 of 2025 was **6.2%**. Among children aged 3-6 years, the detection rate was **2.9%**, among children aged 7-14 years - **1.0%**. The RSV detection rate among patients aged 15 years or older was **0.7%**.

Fig. 2. Cumulative number and percentage of patients positive for RSV by age group in Russian cities, week 40 of 2024 to week 22 of 2025



In the period from week 40 of 2024 to week 22 of 2025, RSV was detected in all weeks. The average RSV detection rate was approximately 1.7%. The highest weekly detection rate of approximately 4.1% was reported on week 18 2025.